



Concealed door frames for stud and block walls

architrave-free design
for a more contemporary look

AGS systems



**Solution at highest level
for design lovers**

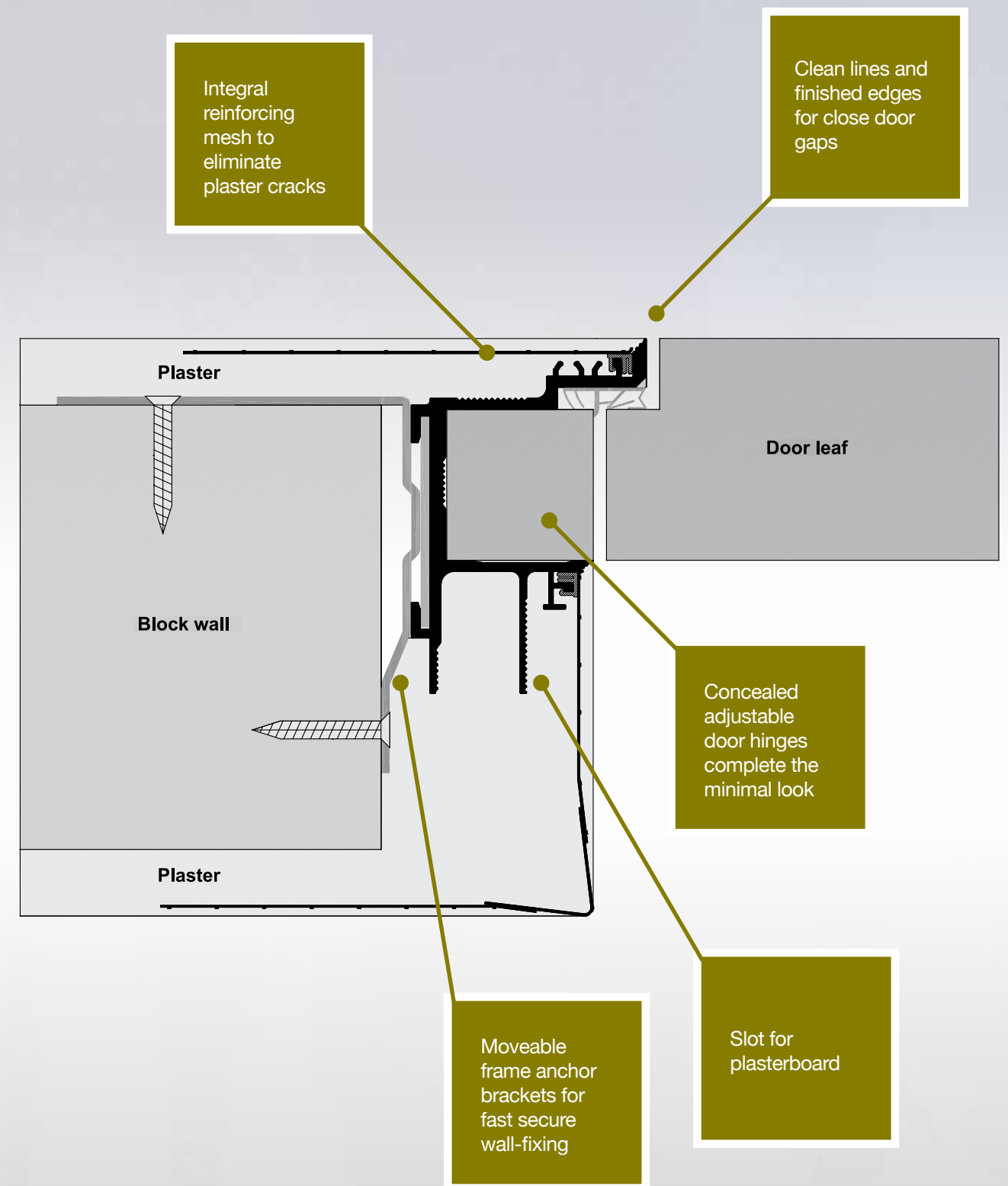


Every door is special
individual, unique, elegant
the door as a design element

No more gap-filling sealants

Architrave-free doorways are an important feature of modern building design, to give rooms a more spacious and uncluttered look. But a door is a moving part of the building, and architraves were designed to conceal the vibration cracks around the door frame.

AGS has overcome this problem for concealed door frames with an integral plastering reinforcement mesh, that bonds the frame to the wall in a permanent way. No cracks, no frame sealants!



Exclusivity and modern design solution
in our focus

Frame production according to the customers requirements

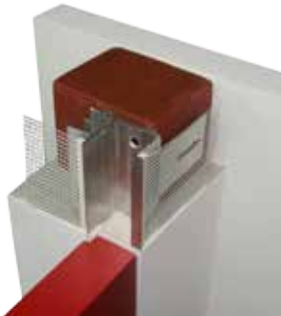
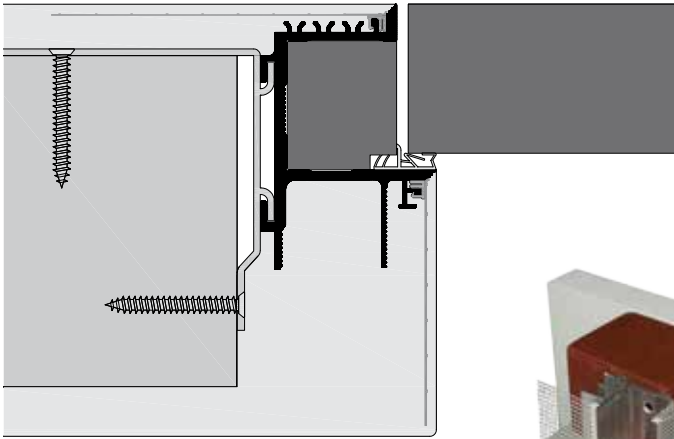
Doorframes
for stud and block walls

Concealed frame
for outward opening doors

TUT TYPE

for 44 to 65 mm door leaves

For maximum flexibility, 30 min tested by Chiltern Fire. The frame profiles are supplied either mitre-cut to size, or loose for cutting and assembly on-site. They are assembled using locking mitre corner inserts, temporary corner braces and bottom spreader bar. The frame is then inserted to one side of the opening, attached using moveable brackets. The snap-in mesh ensures no plaster cracks between wall and frame. The door is hung from concealed adjustable hinges set into full-length hardwood sections inserted on all 3 sides of the frame. Suits standard or floor-to-ceiling doors.

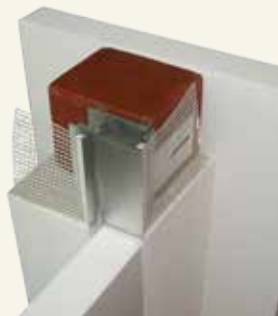
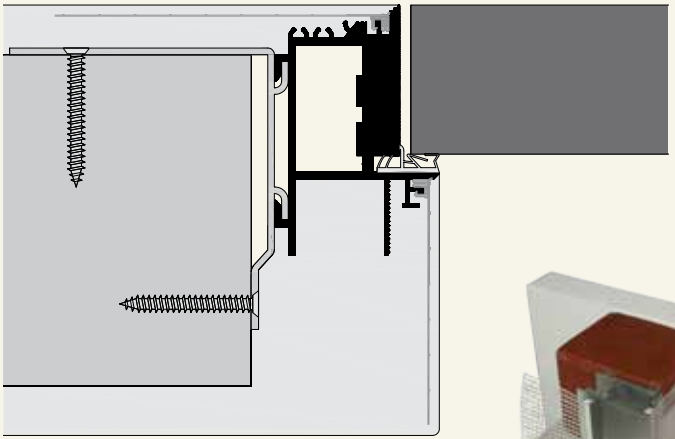


Concealed frame
for outward opening doors

TCT TYPE

for 44/45 mm and 50 mm door leaves

The frame profiles are supplied mitre-cut to suit door size, and machined to suit concealed hinges, lock strikes and other hardware. They are assembled using locking mitre corner inserts, temporary corner braces and bottom spreader bar. The frame is then inserted to one side of the opening, attached using moveable brackets. The snap-in mesh ensures no plaster cracks between wall and frame. The door is hung from concealed adjustable hinges set into the frame. Suits standard or floor-to-ceiling doors.

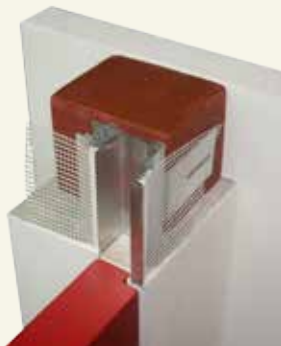
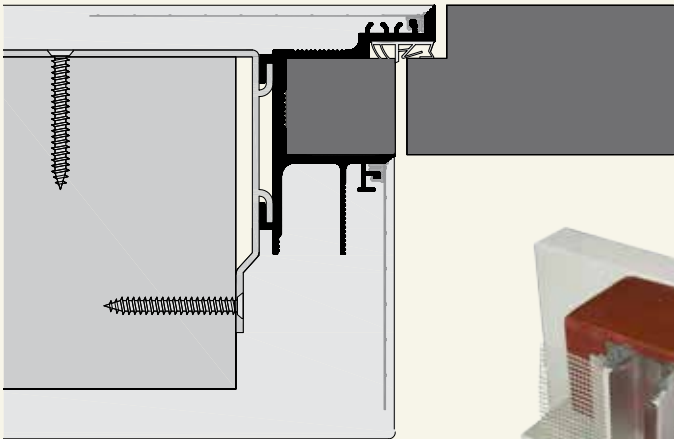


Concealed frame
for inward opening doors

TUS TYPE

for 44 to 59 mm door leaves

For maximum flexibility, 30 min tested by Chiltern Fire. The frame profiles are supplied either mitre-cut to size, or loose for cutting and assembly on-site. They are assembled using locking mitre corner inserts, temporary corner braces and bottom spreader bar. The frame is then inserted to one side of the opening, attached using moveable brackets. The snap-in mesh ensures no plaster cracks between wall and frame. The rebated door is hung from concealed adjustable hinges set into a full-length hardwood sections inserted on all 3 sides of the frame. Suits standard or floor-to-ceiling doors.

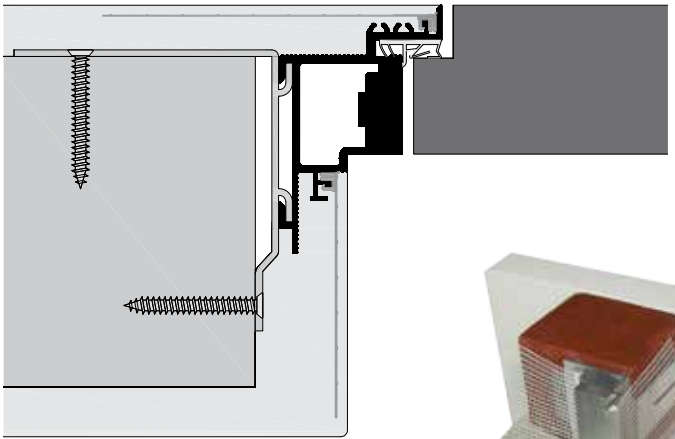


Concealed frame
for inward opening doors

TCS TYPE

for 44/45 and 50 mm door leaves

The frame profiles are supplied mitre-cut to suit door size, and machined to suit concealed hinges, lock strikes and other hardware. They are assembled using locking mitre corner inserts, temporary corner braces and bottom spreader bar. The frame is then inserted to one side of the opening, attached using moveable brackets. The snap-in mesh ensures no plaster cracks between wall and frame. The rebated door is hung from concealed adjustable hinges set into the frame. Suits standard or floor-to-ceiling doors.

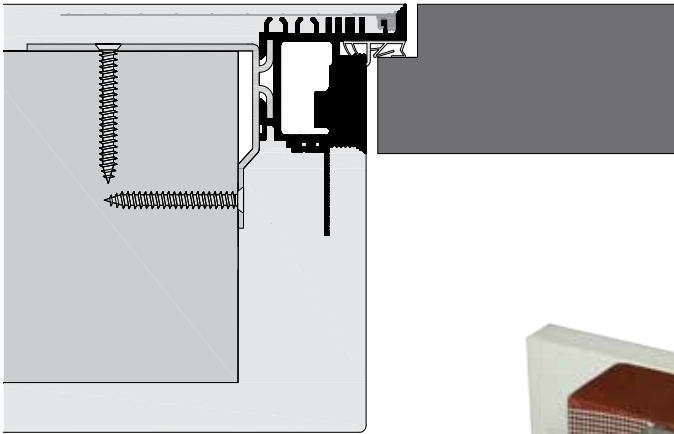


Concealed frame
for inward/outward opening doors

TST TYPE

for 40 and 44 mm door leaves

The frame profiles are supplied mitre-cut to suit door size, and machined to suit concealed hinges, lock strikes and other hardware. They are assembled using locking mitre corner inserts, temporary corner braces and bottom spreader bar. The frame is then inserted to one side of the opening, attached using moveable brackets. The snap-in mesh ensures no cracks appear between wall and frame. The door is hung from concealed adjustable hinges set into the frame. Suits standard or floor-to-ceiling doors.

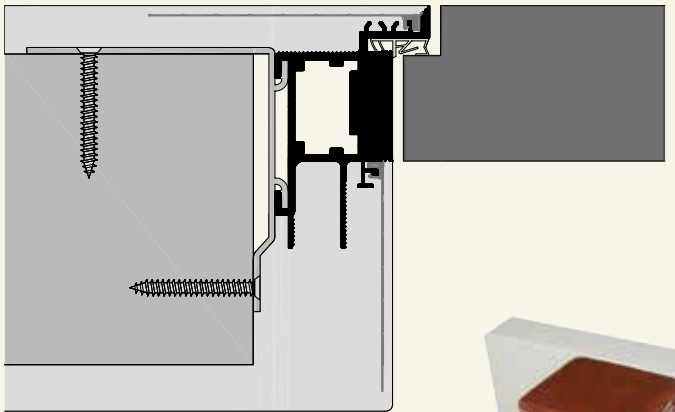


Concealed frame
for inward opening doors
without recess

TCS50F TYPE

for 50 mm door leaves

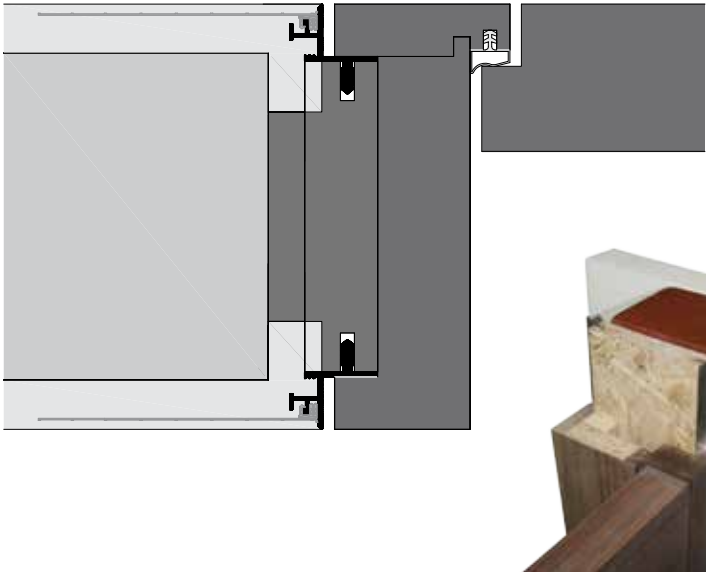
The frame profiles are supplied mitre-cut to suit door size, and machined to suit concealed hinges, lock strikes and other hardware. They are assembled using locking mitre corner inserts, temporary corner braces and bottom spreader bar. The frame is then inserted to one side of the opening, attached using moveable brackets. The snap-in mesh ensures no plaster cracks between wall and frame. The rebated door is hung from concealed adjustable hinges set into the frame. Suits standard or floor-to-ceiling doors.



Shadow gap profile system
for inward/outward opening
timber door frames

TL TYPE
for 40 to 60 mm door leaves

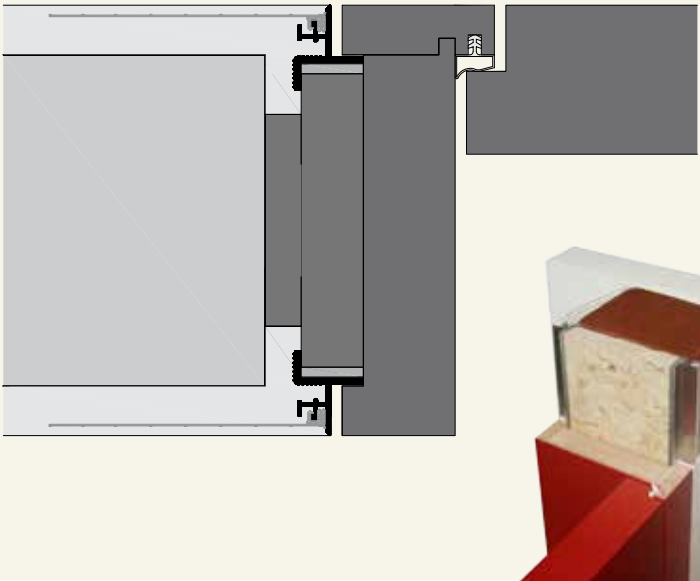
This profile system is push-fitted onto grooves in the frame linings prior to installing a finished timber door frame, to create the perfect shadow gap outline, and eliminate the need for architraves. The snap-in mesh ensures no plaster cracks between wall and frame. Suits standard or floor-to-ceiling doors.



Shadow gap profile system
for inward/outward opening
timber door frames

TFN TYPE
for 40 to 60 mm door leaves

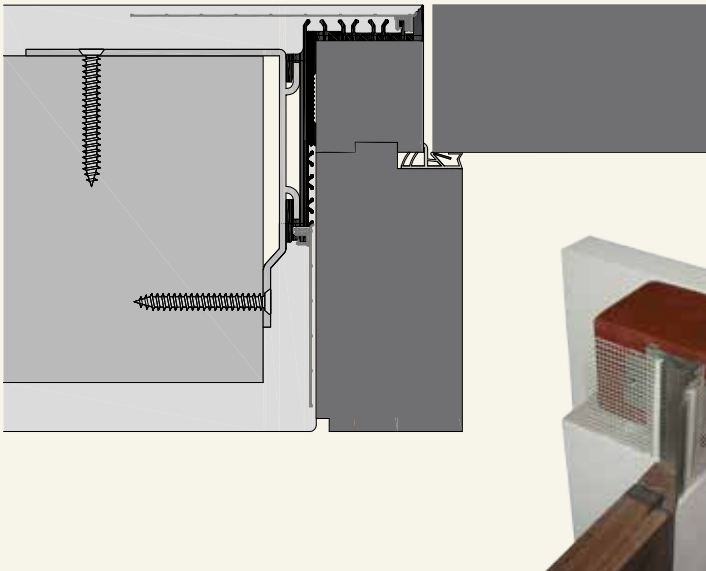
This profile system is fitted to the frame linings prior to installing a finished timber door frame, to create the perfect shadow gap outline, and eliminate the need for architraves. The snap-in mesh ensures no plaster cracks between wall and frame. Suits standard or floor-to-ceiling doors.



Concealed sub-frame
for outward opening
timber door frames

TPL TYPE
for 40 to 65 mm door leaves

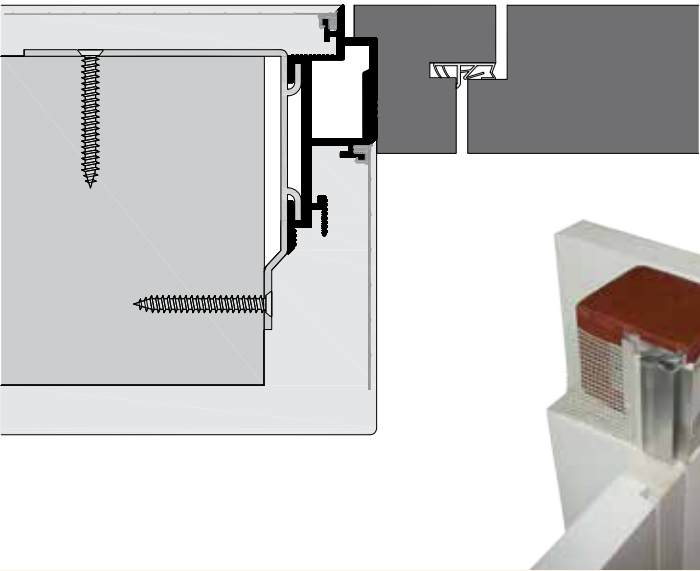
The sub-frame profiles are supplied either mitre-cut to size, or loose for cutting and assembly onsite. They are assembled using locking mitre corner inserts, temporary corner braces and bottom spreader bar. The frame is then inserted to one side of the opening, attached using moveable brackets. The snap-in mesh ensures no plaster cracks between wall and frame. The timber frame and door is hung from the sub-frame. Suits standard or floor-to-ceiling doors.



Concealed sub-frame
for inward/outward opening
timber-framed doors with
shadow gap

TP TYPE
for 44 to 60 mm door leaves

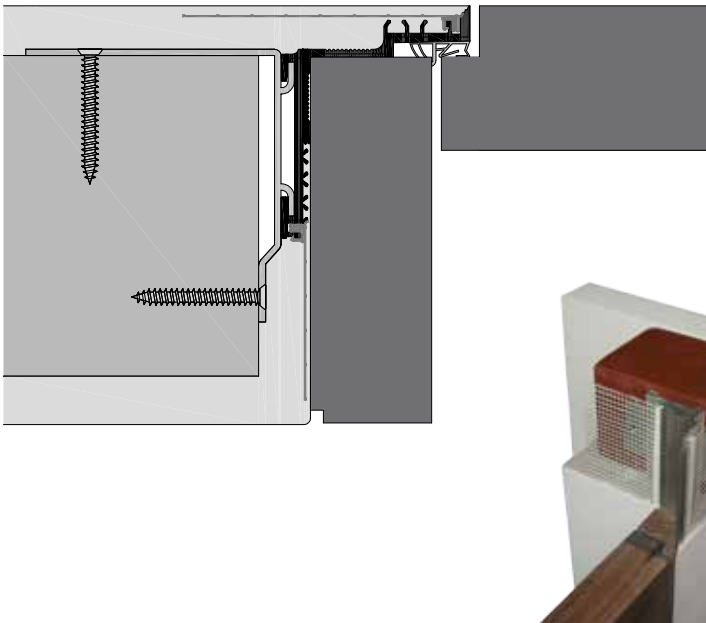
The sub-frame profiles are supplied either mitre-cut to size, or loose for cutting and assembly onsite. They are assembled using locking mitre corner inserts, temporary corner braces and bottom spreader bar. The frame is then inserted to one side of the opening, attached using moveable brackets. The snap-in mesh ensures no plaster cracks between wall and frame. The timber frame and door is hung from the sub-frame, creating a shadow gap. Suits standard or floor-to-ceiling doors.



Concealed sub-frame
for inward opening
timber door frames

TPS TYPE
for 40 to 65 mm door leaves

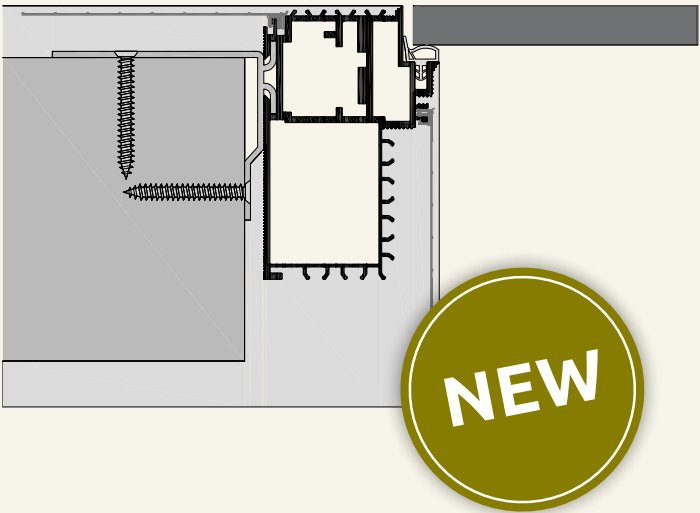
The sub-frame profiles are supplied either mitre-cut to size, or loose for cutting and assembly onsite. They are assembled using locking mitre corner inserts, temporary corner braces and bottom spreader bar. The frame is then inserted to one side of the opening, attached using moveable brackets. The snap-in mesh ensures no plaster cracks between wall and frame. The timber frame and door is hung from the sub-frame. Suits standard or floor-to-ceiling doors.



Concealed frame
for glass doors

TCG TYPE
for glass doors of 8 mm

Specially invented for all-glass doors of 8 mm. The frame profiles are supplied mitre-cut to suit door size, and machined to suit concealed hinges, lock strikes and other hardware. They are assembled using locking mitre corner inserts, temporary corner braces and bottom spreader bar. The frame is then inserted to one side of the opening, attached using moveable brackets. The snap-in mesh ensures no plaster cracks between wall and frame. The door is hung from concealed adjustable hinges set into the frame. Suits standard or floor-to-ceiling doors.





Wall-flush skirting boards

for an uniforme appearance

More infos provided on www.ags-systems.com



PRODUCT RANGE

<div>Concealed aluminium door frame type TUS</div> <div>including protective film and mesh support for door leaves of 44/45, 50, 56 und 59 mm standard profile length 1100, 2200, 2750 mm</div> <table><tr><th>Description</th><th>Item no.</th></tr><tr><td>TUS45</td><td>10445</td></tr><tr><td>TUS50</td><td>10450</td></tr><tr><td>TUS56</td><td>10456</td></tr><tr><td>TUS59</td><td>10459</td></tr></table>	Description	Item no.	TUS45	10445	TUS50	10450	TUS56	10456	TUS59	10459		<div>Concealed aluminium door frame type TUT</div> <div>including protective film and mesh support for door leaves of 44/45, 50, 56 and 59 mm standard profile length 1100, 2200, 2750 mm</div> <table><tr><th>Description</th><th>Item no.</th></tr><tr><td>TUT45</td><td>10345</td></tr><tr><td>TUT59</td><td>10359</td></tr></table>	Description	Item no.	TUT45	10345	TUT59	10359	
Description	Item no.																		
TUS45	10445																		
TUS50	10450																		
TUS56	10456																		
TUS59	10459																		
Description	Item no.																		
TUT45	10345																		
TUT59	10359																		
<div>Concealed aluminium door frame type TCS</div> <div>including protective film and mesh support for door leaves of 44/45 and 50 mm maximum door height 3 m</div> <table><tr><th>Description</th><th>Item no.</th></tr><tr><td>TCS45</td><td>10645</td></tr><tr><td>TCS50</td><td>10650</td></tr><tr><td>TCS50F</td><td>10660</td></tr></table>	Description	Item no.	TCS45	10645	TCS50	10650	TCS50F	10660		<div>Concealed aluminium door frame type TCT</div> <div>including protective film and mesh support for door leaves of 44/45 and 50 mm maximum door height 3 m</div> <table><tr><th>Description</th><th>Item no.</th></tr><tr><td>TCT45</td><td>10545</td></tr></table>	Description	Item no.	TCT45	10545					
Description	Item no.																		
TCS45	10645																		
TCS50	10650																		
TCS50F	10660																		
Description	Item no.																		
TCT45	10545																		
<div>Concealed aluminium door frame type TST</div> <div>including protective film and mesh support for door leaves of 40 and 44 mm maximum door height 3 m</div> <table><tr><th>Description</th><th>Item no.</th></tr><tr><td>TST40</td><td>10740</td></tr><tr><td>TST45</td><td>10130</td></tr></table>	Description	Item no.	TST40	10740	TST45	10130		<div>Concealed aluminium door frame type TCG</div> <div>including protective film and mesh support for glass doors of 8 mm maximum door height 3 m</div> <table><tr><th>Description</th><th>Item no.</th></tr><tr><td>TCG</td><td>10160</td></tr></table>	Description	Item no.	TCG	10160							
Description	Item no.																		
TST40	10740																		
TST45	10130																		
Description	Item no.																		
TCG	10160																		
<div>Aluminium sub-frame type TPL</div> <div>including protective film and mesh support for door leaves of 40 to 65 mm standard profile length 1100, 2200, 2750 mm</div> <table><tr><th>Description</th><th>Item no.</th></tr><tr><td>TPL</td><td>10150</td></tr></table>	Description	Item no.	TPL	10150		<div>Aluminium sub-frame type TPS</div> <div>including protective film and mesh support for door leaves of 40 to 65 mm standard profile length 1100, 2200, 2750 mm</div> <table><tr><th>Description</th><th>Item no.</th></tr><tr><td>TPS</td><td>10140</td></tr></table>	Description	Item no.	TPS	10140									
Description	Item no.																		
TPL	10150																		
Description	Item no.																		
TPS	10140																		
<div>Aluminium sub-frame type TP</div> <div>including protective film and mesh support for door leaves of 44 to 60 mm standard profile length 1100, 2200, 2750 mm</div> <table><tr><th>Description</th><th>Item no.</th></tr><tr><td>TP</td><td>10121</td></tr></table>	Description	Item no.	TP	10121		<div>Aluminum shadow gap frame type TFN</div> <div>including protective film and mesh support for door leaves of 40 to 60 mm standard profile length 1100, 2200, 2750 mm</div> <table><tr><th>Description</th><th>Item no.</th></tr><tr><td>TFN</td><td>10115</td></tr></table>	Description	Item no.	TFN	10115									
Description	Item no.																		
TP	10121																		
Description	Item no.																		
TFN	10115																		
<div>Aluminum shadow gap frame type TL</div> <div>including protective film and mesh support for door leaves of 40 to 60 mm standard profile length 1100, 2200, 2750 mm</div> <table><tr><th>Description</th><th>Item no.</th></tr><tr><td>TL</td><td>10110</td></tr></table>	Description	Item no.	TL	10110		<div>Bottom spreader bar set (distance spacer)</div> <table><tr><th>Description</th><th>Item no.</th></tr><tr><td>TUT, TUS, TCT, TCS, TP, TPL, TPS</td><td>13013</td></tr><tr><td>TST, TCG</td><td>13053</td></tr></table>	Description	Item no.	TUT, TUS, TCT, TCS, TP, TPL, TPS	13013	TST, TCG	13053							
Description	Item no.																		
TL	10110																		
Description	Item no.																		
TUT, TUS, TCT, TCS, TP, TPL, TPS	13013																		
TST, TCG	13053																		
<div>PVC mesh</div> <div>suitable for all door frames of AGS systems length 2300 mm packaging unit 30 pcs</div> <table><tr><th>Item no.</th></tr><tr><td>13042</td></tr></table>	Item no.	13042		<div>Wall fixing bracket wall thickness < 100</div> <table><tr><th>Description</th><th>Item no.</th></tr><tr><td>TUT, TUS, TCT, TCS, TP, TPL, TPS</td><td>13010R100</td></tr></table>	Description	Item no.	TUT, TUS, TCT, TCS, TP, TPL, TPS	13010R100											
Item no.																			
13042																			
Description	Item no.																		
TUT, TUS, TCT, TCS, TP, TPL, TPS	13010R100																		
<div>Corner connector set</div> <table><tr><th>Description</th><th>Item no.</th></tr><tr><td>TUT, TUS, TCT, TCS, TP, TPL, TPS</td><td>13011</td></tr></table>	Description	Item no.	TUT, TUS, TCT, TCS, TP, TPL, TPS	13011		<div>Wall fixing bracket wall thickness 100</div> <table><tr><th>Description</th><th>Item no.</th></tr><tr><td>TUT, TUS, TCT, TCS, TP, TPL, TPS</td><td>13010 A</td></tr><tr><td>TST40</td><td>13055</td></tr><tr><td>TST45, TCG</td><td>13052</td></tr></table>	Description	Item no.	TUT, TUS, TCT, TCS, TP, TPL, TPS	13010 A	TST40	13055	TST45, TCG	13052					
Description	Item no.																		
TUT, TUS, TCT, TCS, TP, TPL, TPS	13011																		
Description	Item no.																		
TUT, TUS, TCT, TCS, TP, TPL, TPS	13010 A																		
TST40	13055																		
TST45, TCG	13052																		
<div>Double-sided adhesive tape</div> <div>3 mm for TFN profile, coil of 5,5 m</div> <table><tr><th>Item no.</th></tr><tr><td>50050</td></tr></table>	Item no.	50050																	
Item no.																			
50050																			

*Excess lengths on request



> Minimal > Aesthetic > Hygienic > Functional > Easy to assemble

More information, sectional drawings as
DWG or PDF file are available on our website
www.ags-systems.com

AGS-SYSTEMS SRL

Stava 47/B | I-39025 Naturno (BZ)
Ph. +39 0473 666376
Fax +39 0473 420390
info@ags-systems.com
www.ags-systems.com

Trading partner:

Follow us on

