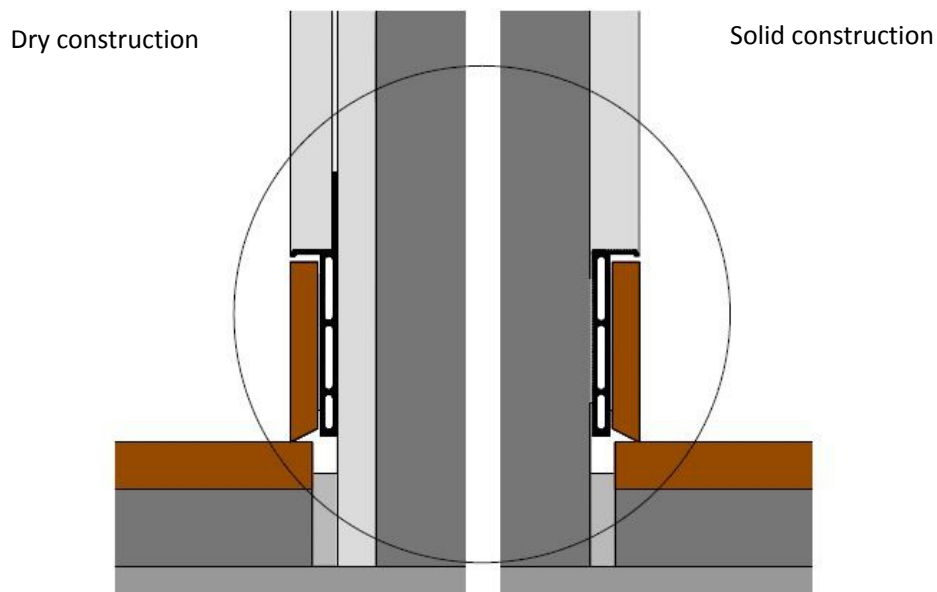


---

## Concealed profiles for skirting boards „Light“ for solid and dry construction

---



### Description



The Light aluminium profile for solid and dry construction is used to create **wall flush skirting boards**. The furniture can be placed against the wall without the need of reworking the dado. With its clear lines and a fluent passage from the skirting board to the plaster they refine the **visual effect** of the room and meet modern design standards. Because there is no direct contact between floor, skirting board and brickwork the flush is the ideal impact footfall sound solution. The profiles are useable in many different ways and can be also installed on stairs and curved walls. A special highlight is the integration of LED-backlighting, which can be functionally and estetically used in every room as a background lighting. The functionality to compensate undiserable effects like wall irregularities and the possibility to insert a huge range of materials make the flush to be the perfect solution in every room. The flush guarantees timeless elegance, peace and familiarity inside your own four walls.

## Material



The skirting board profiles are made of raw untreated aluminium alloy EN EW-6060 (Al-MgSi) with a possible toleration according to UNI EN 755-9. This alloy offers good stability values and it especially suits as a construction material for high surface requirements. The profiles are covered by a protective film and are delivered pre-drilled with a length of 2 metres.

Cement and his derivatives produce alkaline substances when getting wet, which can provoke corrosion if they have time to work on the surface of the aluminium alloy. We recommend to keep the profiles clear from cement, glue and joints material.

Aluminium is not resistant against all chemical compounds, so the contact with hydrocarbon (HCl) and phosphoric acid (H<sub>3</sub>PO<sub>4</sub>) should be avoided. Also cleaning products for stones, ceramics and suchlike can damage the surface.

## Installation



The plugable profiles are made of already pre-drilled aluminium and the patented plug system, with appropriate internal- and external angles allows an exact, easy and quick installation. The installation has to be done before plastering services and can be done before or after screed setting.

As soon as the installation is completed a wide range of skirting boards which meet your preferences can be inserted. The installation manual must be read carefully before mounting. For a professional assembly only the recommended materials from AGS-systems must be used, otherwise every liability expires.

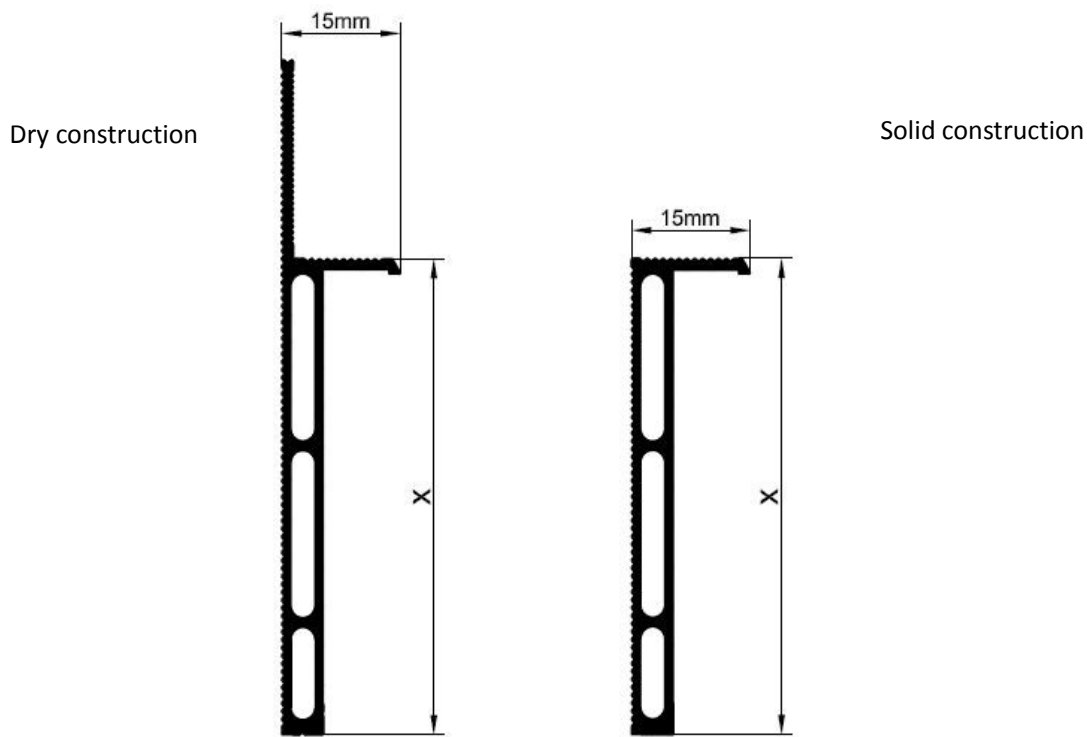
## Skirting boards



There are no limits of material for skirting boards installation in our Light profiles. The product offers range from solid wood, multi-layer ledges and aluminium as well as inox laminate with a thickness of 9 mm. They can be provided raw, lacquered, oiled or anodized and in all different colours depending on the costumers need.

## Profiles

The aluminium profiles are delivered with a length of 2 metres, already pre-drilled and covered by a protective film and vary in the height of the final size of the skirting boards needed.



Light profiles		
<u>Solid construction</u>		
Description	Item number	Height (x)
Light 80	10080	80 mm
Light 60	10061	60 mm
Light 46	10046	46 mm
<u>Dry construction</u>		
Description	Item number	Height (x)
Light 60	10060	60 mm
Light 46	10045	46 mm

We guarantee for a high quality of our products. Our processing guidelines are based on tests and practical experiences; they are only indication without assurance of properties, we have no influence on condition of construction sites and the realizations of the works.

Country specific regulations, which consist on regional standards, building regulations, processing and industrial guidelines, can guide to specific processing recommendations.