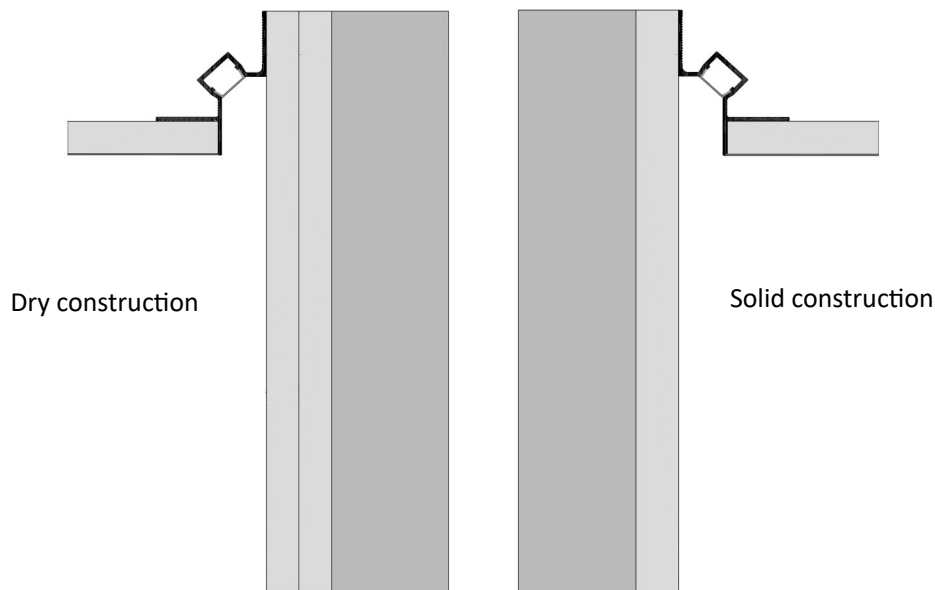


Concealed profiles for shadow gaps

ILLU A for solid and dry construction



Description



The ILLU A aluminium profile for dry construction is used to create **wall flush shadow gaps illuminated with LED strips** for solid and drywall construction.

With its clear lines and a fluent passage the **visual effect** of the room and meet modern design standards.

Material



The shadow gaps profiles consist of a black anodized aluminium alloy EN EW-6060 (Al-MgSi) with a possible toleration according to UNI EN 755-9. This alloy offers good strength value, is corrosion-resistant and is particularly suitable as a construction material for high surface requirements.

Cement and its derivatives produce, in wet conditions, alkaline substances which could possibly lead to corrosion.

Corrosion is prevented by the recommended on-site priming and painting of the profile in wall paint. Aluminium is not resistant to all chemical compounds, therefore contact with hydrogen chloride (HCl) and phosphoric acid (H₃PO₄) should be avoided.

Products for cleaning stones, ceramics etc. can also damage the surface.

However, as the flush-mounted profile is not directly visible, this has no influence on the quality in the installed condition.

Moisture or salt water can discolour the surface of the profile.

Installation



The profiles enable accurate and quick installation, ensuring perfect lines. Installation takes place after the walls have been plastered and before the plasterboard ceiling is suspended.

With regard to installation in apartments or houses with energy efficiency certification, it is recommended that you obtain detailed information.

Assembly and installing video:



solid and dry construction

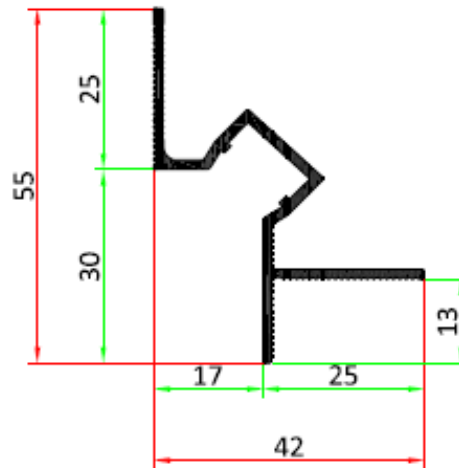
Shadow gaps for ceiling



ILLU A ceiling profiles are profiles with visible joints. The profiles can be fitted with an LED strip (not included in the scope of delivery) to illuminate the visible joint. A diffuser to cover the LED strip is not included in the scope of delivery but can be ordered separately. These are 2 m long.

Profiles

The aluminium profiles are provided with a protective foil and are pre-drilled and supplied with a length of 2500 mm.



ILLU A profile		
<u>Solid and dry construction</u>		
Description	Item number	Height
ILLU A	10024	25 mm
Diffusor	10026	

We guarantee for a high quality of our products. Our processing guidelines are based on tests and practical experiences; they are only indication without assurance of properties, we have no influence on condition of construction sites and the realizations of the works.

Country specific regulations, which consist on regional standards, building regulations, processing and industrial guidelines, can guide to specific processing recommendations.